

Maldives Land and Survey Authority,

MINISTRY OF HOUSING AND INFRASTRUCTURE

Ameenee Magu, Maafannu, Male', 20392, Maldives.

Office (PABX): +(960) 3004300, Fax: +(960) 3004254

Email: survey@mhe.gov.mv

Web: www.surveyofmaldives.gov.mv, www.mhe.gov.mv



CONTROL POINT DETAILS		Station Number	PSM 5551
Coordinate Information			
Geodetic		Grid	
WGS 84		UTM Zone 43	
Lat:	6° 55' 41.39802" N	E:	294030.3295m
Long:	73° 08'08.87951" E	N:	766212.1834m
Ellp Height:		Orth Height:	2.092m
Island Name: H.A Beenaafushi		Date:	25th – 28th November 2013

Monument description & method of survey:

- o Type A monument
- o PSM5551 is position using static GNSS surveying method.

General site condition & access:

- o PSM5551 was established in the vegetation line of the island
- o PSM5551 is located in an area which is easy to access and locate.

Owner: **Yacht Tours Maldives Pvt,Ltd.**



Bottom



North



East



Up



South



West

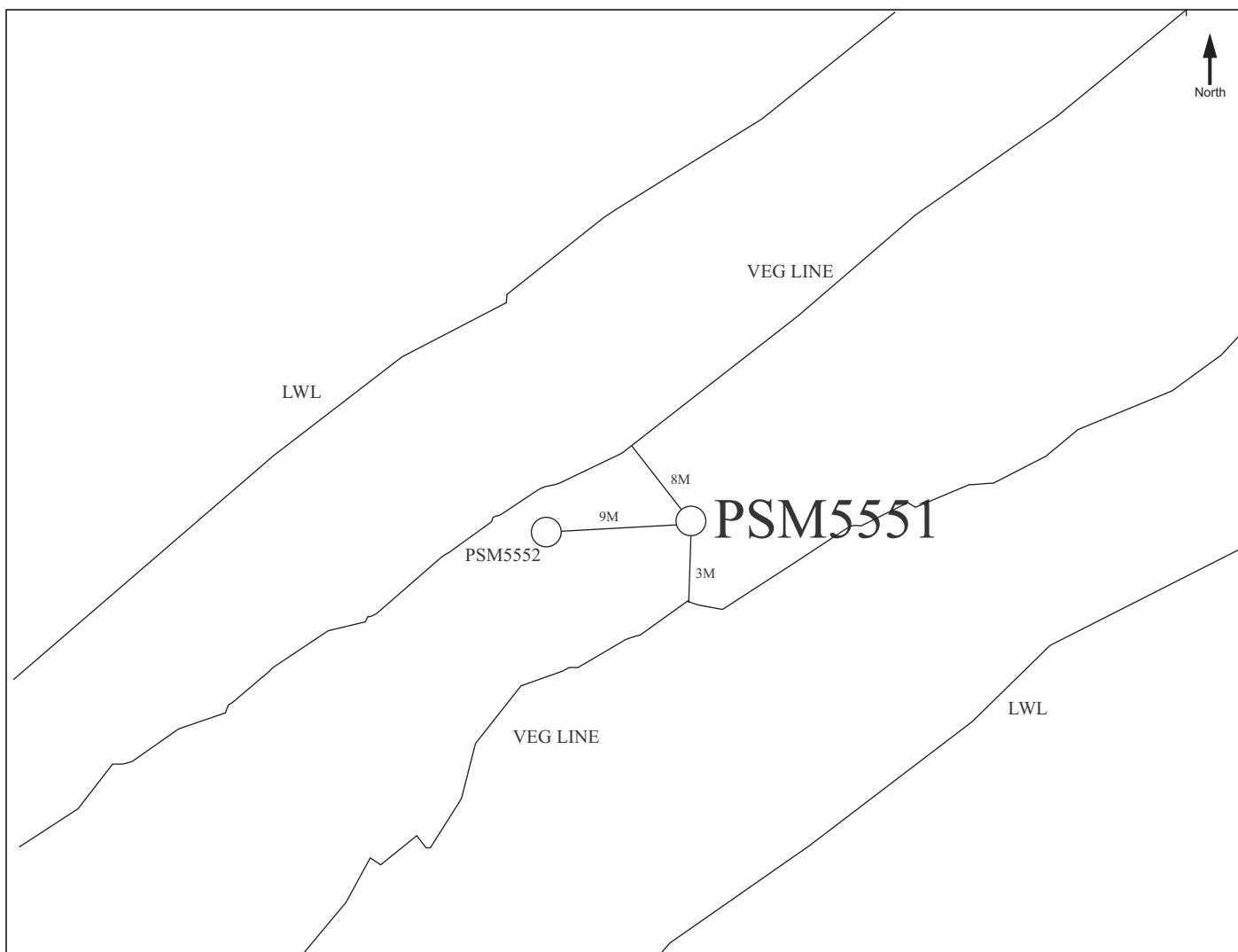
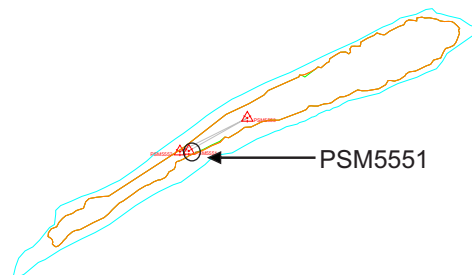
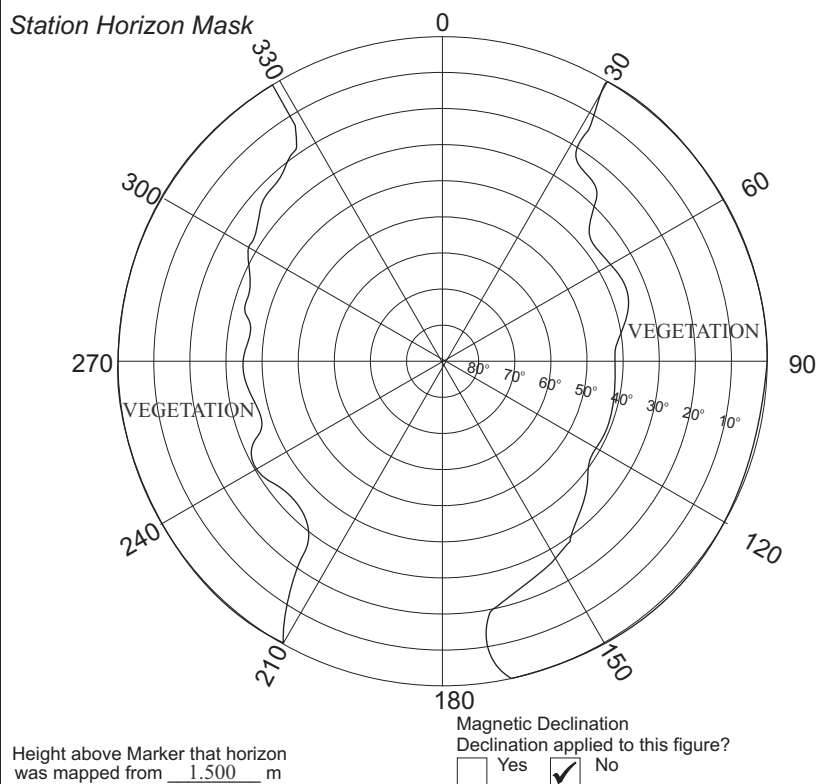
SITE INFORMATION

Station Number

PSM 5551

Station Horizon Mask

Locality



Sketched by: Abulho

Scale: Not to scale

Date: December. 2013

Maldives Land and Survey Authority,

MINISTRY OF HOUSING AND INFRASTRUCTURE

Ameenee Magu, Maafannu, Male', 20392, Maldives.

Office (PABX): +(960) 3004300, Fax: +(960) 3004254

Email: survey@mhe.gov.mv

Web: www.surveyofmaldives.gov.mv, www.mhe.gov.mv



CONTROL POINT DETAILS		Station Number	PSM 5552
Coordinate Information			
Geodetic		Grid	
WGS 84		UTM Zone 43	
Lat:	6° 55' 41.46958" N	E:	294021.4656m
Long:	73° 08'08.59052" E	N:	766214.4171m
Ellp Height:		Orth Height:	1.912m
Island Name: H.A Beenaafushi		Date: 25th – 28th November 2013	

Monument description & method of survey:

- o Type A monument
- o PSM5552 is position using static GNSS surveying method.

General site condition & access:

- o PSM 5552 was established in the vegetation line of the island.
- o PSM 5552 is located in an area which is easy to access and locate.

Owner: **Yacht Tours Maldives Pvt,Ltd.**



Bottom



North



East



Up



South



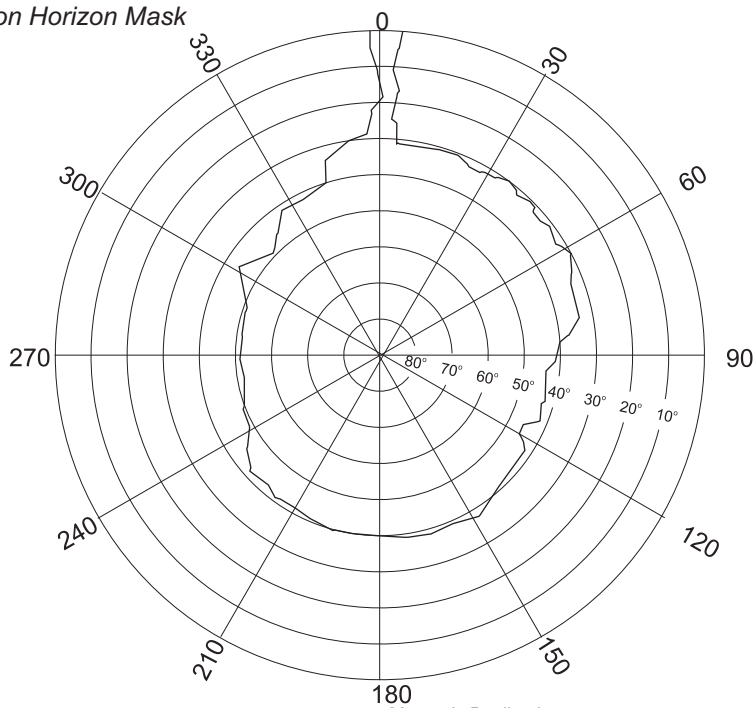
West

SITE INFORMATION

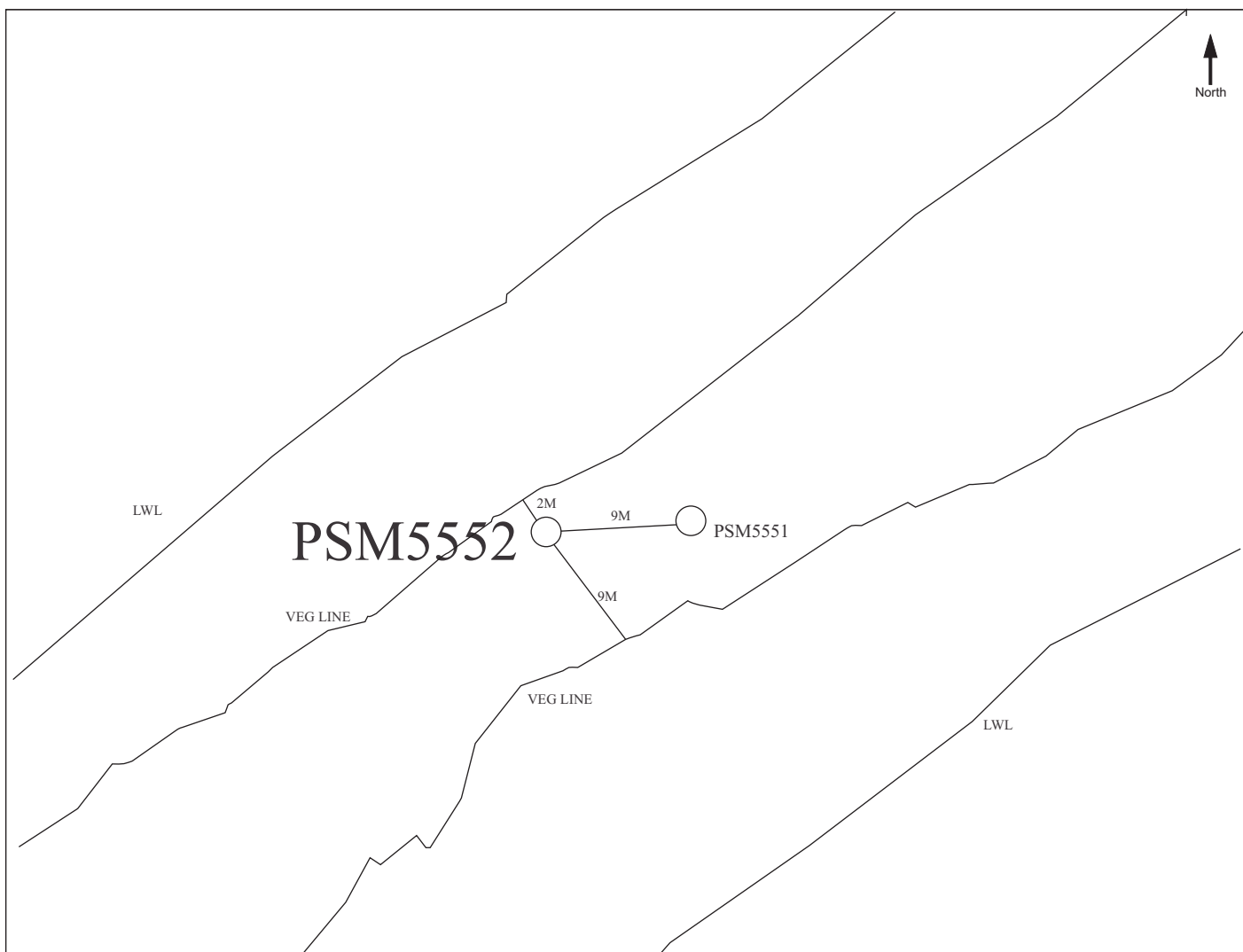
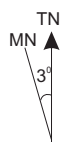
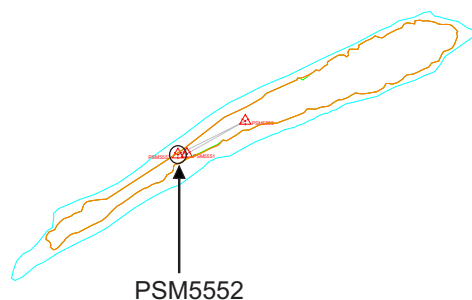
Station Number

PSM 5552

Station Horizon Mask



Locality



Sketched by: Abulho

Scale: Not to scale

Date: December. 2013

Maldives Land and Survey Authority,

MINISTRY OF HOUSING AND INFRASTRUCTURE

Ameenee Magu, Maafannu, Male', 20392, Maldives.

Office (PABX): +(960) 3004300, Fax: +(960) 3004254

Email: survey@mhe.gov.mv

Web: www.surveyofmaldives.gov.mv, www.mhe.gov.mv



CONTROL POINT DETAILS		Station Number	PSM 5553
Coordinate Information			
Geodetic		Grid	
WGS 84		UTM Zone 43	
Lat:	6° 55' 42.68571" N	E:	294095.8697m
Long:	73° 08' 11.00922" E	N:	766251.4886m
Ellp Height:		Orth Height:	1.705m
Island Name: H.A Beenaafushi		Date:	25th – 28th November 2013

Monument description & method of survey:

- o Type A monument
- o PSM5553 is position using static GNSS surveying method.

General site condition & access:

- o PSM 5553 was established in the vegetation line of the island.
- o PSM 5553 is located in an area which is easy to access and locate.

Owner: Yacht Tours Maldives Pvt,Ltd..



Bottom



North



East



Up



South



West

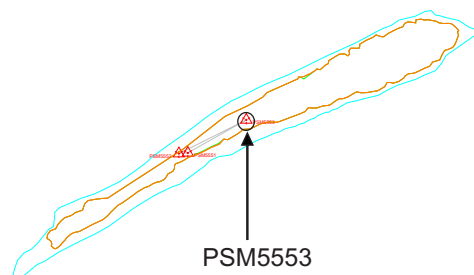
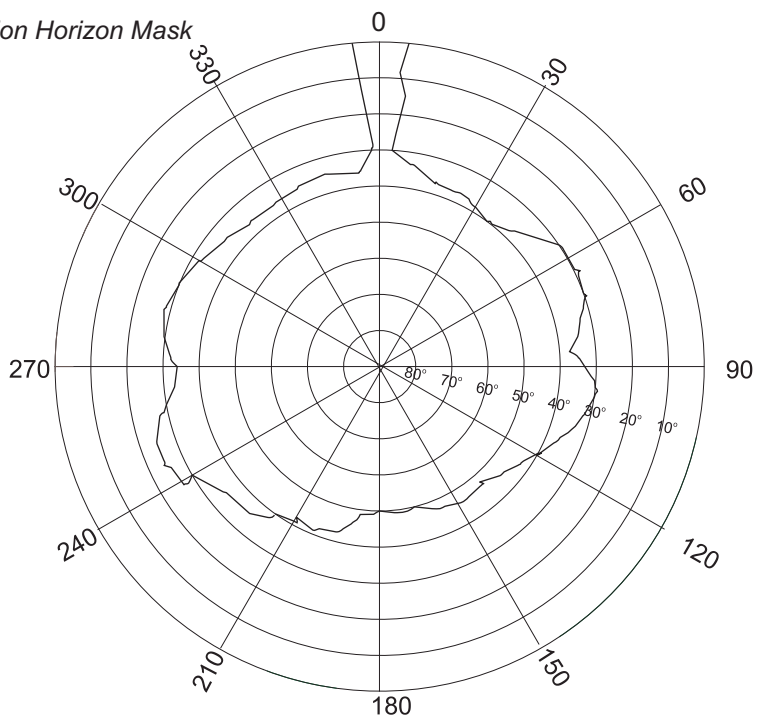
SITE INFORMATION

Station Number

PSM 5553

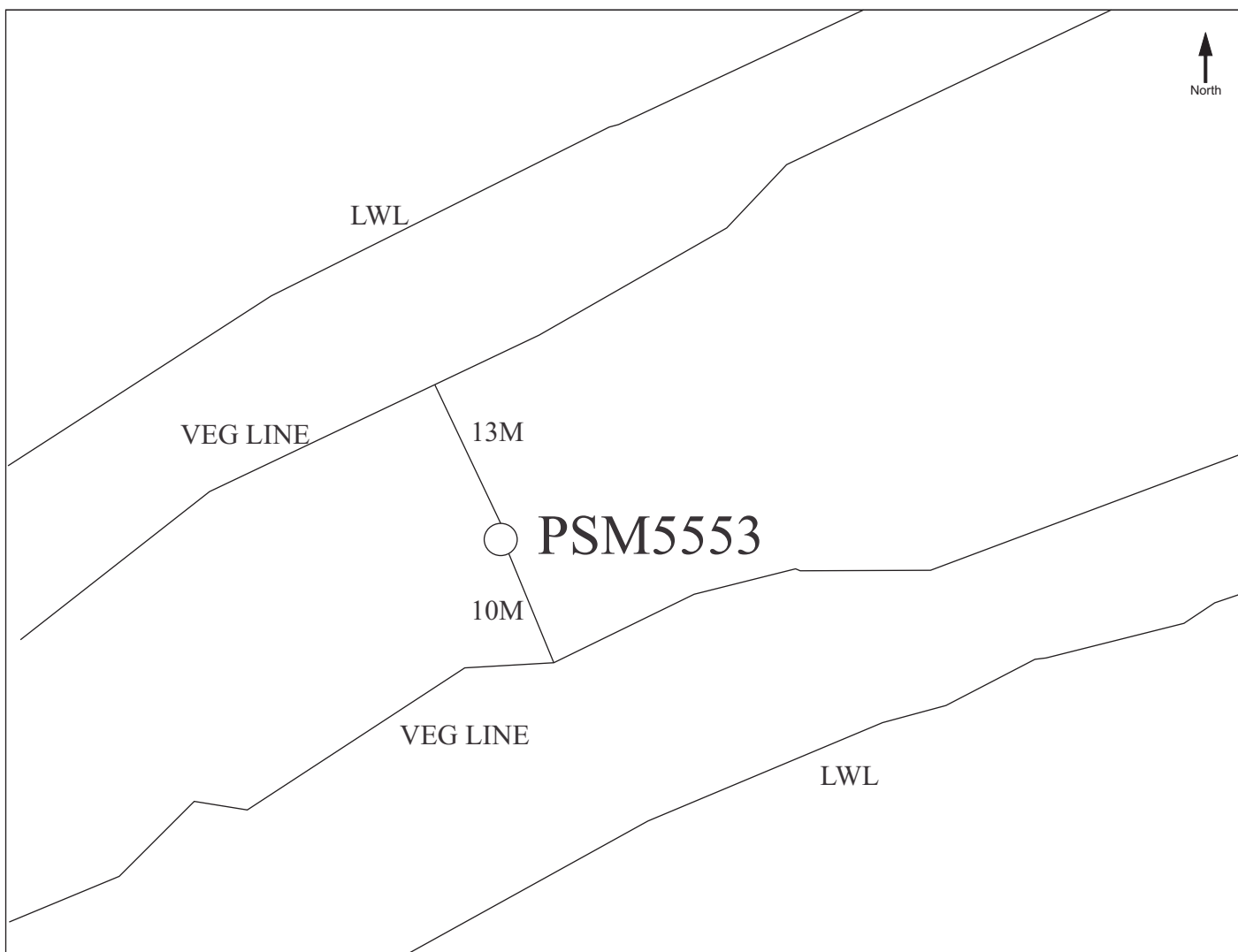
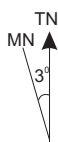
Station Horizon Mask

Locality



Height above Marker that horizon was mapped from 1.500 m

Magnetic Declination Declination applied to this figure?
☐ Yes ☒ No



Sketched by: Abulho

Scale: Not to scale

Date: December. 2013